



Pickaway
County
Job & Family
Services

Messenger

Volume III, Issue 8
Fall 2006

Rojanne Woodward, Director

Message from the Director

By: *Rojanne Woodward*

In my first few months as Director I have had an opportunity to meet and talk individually with all staff. While it took some time to do this, I found it to be time well spent. I shared with each person some of my goals and interests for the agency. My overall interest is to make sure that we meet our mission to serve the people of Pickaway County - to make sure we do what we are supposed to do for the people who come through our doors. I also explained my support and interest in higher education and economic development initiatives in the community. Community involvement, relationships, and partnering are areas which I

stressed that we all have a responsibility for and that I will encourage participation by all staff. Some other areas I want to work on are improving service delivery, internal communication and coordination, and staff development.

I found that many of you have a lot of these things on your mind as well. Many of your concerns relate to our customers and enhancing services or improving how we deliver services. You also expressed internal communication and coordination issues, even though we have made good progress in this area. Many of you expressed a desire to further develop your skills and

knowledge and to advance in the agency. This fits with my goal of staff development.

Through these talks I have learned a little more about some of the areas with which I was not very familiar. I found that across the agency, we have a lot of heart for the people we serve. When asking workers what they would change or improve in the agency, most workers focused on issues related to our customers, not themselves. In a few months, I would like to revive our strategic planning for the agency and to work on some of the very issues expressed by workers during these interviews.

New Family Support Administrator Named

By: *Joy Ewing*

As everyone knows, beginning September 3rd, I started as the new Family Support Administrator. I have big shoes to fill, and the transition has been smooth. I recently passed the Nursing Home and Waiver caseload to Don and Danielle and I am focusing on my new duties and projects.

There are several projects I have taken over. One of the first duties has been working with the Program Managers and Lead Workers in the Adult and Family Units to develop a restructure plan. Our goal is to provide same day service to new applicants, in a way that is least disruptive to staff. The Lead Workers started this project in the spring. Since



Pictured from left to right: **Rojanne Woodward, Director and Joy Ewing, Family Support Administrator**

then, they have been working with the Program Managers, and gathering feedback from workers to create a plan. It is a work in progress. An implementation date has not been set, but everyone is working hard to create a plan and start date.

For anyone that may not know me, here are a few things about myself. My college internship included a practicum with Clinton County Job and Family Services. I graduated in 1995 from Wilmington College with a degree in Social Work. I worked one year at Fairfield County and I started

Inside this issue:

Child Support Awareness.....	2
JOB'S One-Stop—2nd Annual Youth Fest	2
Foster Care Program Gets a !00%	3
PCJFS New Post Office Box Number	3
Higher Education Update	4
Upcoming Events	4
New Adoption Assessors	4
Right Fax is Here!	4
PCJFS Keeps Community Partnerships.....	5
JOB'S One-Stop Holds Workshop & Job Fair	5
100th Annual Pumpkin Show	6
“Heart Walk”	6
PCJFS “Biggest Loser”	6
PCJFS Staffing Changes	7
Recipe - “Pumpkin Walnut Fudge”	7
“Our Little Stars”	7
Birthdays	7

If you wish to receive this publication electronically, please e-mail us at info@pickawayjfs.org

in Pickaway County in 1996. My background is varied. I started in Child Support, moved to Adult Protective Services, and most recently, Income Maintenance.

I met my husband, Scott, in college. We have been married for 10 years. I have 2 children, Grace and Gavin. Grace is a first grader at Washington Elementary. Gavin is 4 years old and attends preschool at Laurelville Elementary.

The transition has been easier with all the support. Everyone has been extremely helpful and patience while I am learning. I am appreciative and fortunate to work with a great group of people.

Child Support Awareness:

An Important Issue

By: *Debi Hoffhines*

In an effort to increase public awareness of child support issues, Governor Taft designated August as Child Support Awareness Month. A proclamation issued by the Pickaway County Commissioners recognized the role that working partnerships between state and federal agencies, parents, legislators, judges, employers and others play in Ohio's child support program.

The purpose of the child support program is to provide children with the opportunity for a better life. Working with both parents to establish and enforce support orders is essential in helping children receive the financial and medical support they deserve. The program also strives to benefit tax payers by defraying the cost of public assistance by helping families become and remain self sufficient. Next to public education, no other social service program affects more children than the child support enforcement program.

Child Support agencies in the state of Ohio assist millions of people a year. There are approximately 986,000 child support cases in the state. Ohio has the sixth largest child support caseload and ranks second in total collections across the nation.

Locally, the Pickaway County CSEA administers more than 3700 active support cases. In 2005, the agency collected in excess of \$8.9 million utilizing a number of enforcement methods including income withholdings, interception of federal and state income tax returns, suspension of professional and drivers licenses, credit bureau reporting and seizure of bank and financial accounts.

The CSEA also offers many services including: establishment of paternity, enforcement of medical and support orders, review and modification of child support orders and location of non-residential parents. The agency routinely works with the Sheriff's Office, Prosecutor's Office, Common Pleas and Juvenile Courts to enforce support orders.



Pictured above: Child Support Interim Administrator Debi Hoffhines

Child Support Enforcement Agencies around the State conducted activities that emphasized the theme, **KIDS COUNT – MAKE SURE THEY CAN COUNT ON YOU. CHILD SUPPORT MATTERS.** Pickaway County CSEA hosted an Open House on August 1, 2006. Some other activities during August included Awareness Lobby Days, a children's coloring contest, website information, Channel 5 Advertisement, Radio announcement, and an Employee appreciation cookout. The employees of Pickaway County CSEA worked diligently to make Child Support Awareness Month a great success.



Pictured above from left to right are PCJFS Child Support Workers: Judith Topping, Linda Coffman, Dee Thornton, Stephanie Eitel, Teryl Seitz, Rick Noble, Bonnie Dozier, Lisa Leach, Tammy Smith, and Tammy Meadows

JOBS One-Stop to Hold 2nd Annual Youth Fest

By: *Julie Bolen*

The JOBS One-Stop has set a tentative date of April 24, 2007 for their 2nd annual Youth Fest. The Youth Fest will have representatives from several employers and colleges, as well as the "Battle of the Bands". They will be requesting audition tapes from interested bands. The band must have at least one musician that is school aged and a Pickaway County resident to participate in the "Battle of the Bands".

If you know of a band that might be interested in participating, please have them contact Julie Bolen at (740) 420-7339 ext. 330 for more details.



Foster Care Program Gets a 100% on Program Audit

By: JoEllen Deal

Congratulations to Missy, Foster Care Coordinator, and the Children Services staff for our A+. We recently endured a grueling review of our foster care program, foster parent records, and our conformity to the Multiethnic Placement Act. The Multiethnic Placement Act (MEPA) was designed to decrease the time children wait for foster and adoption placement, prevent discrimination in the placement of children, and aid in the identification and recruitment of foster and adoptive families who can meet each child's needs. It also prohibits any agency from denying any person the opportunity to become a foster or adoptive parent on the basis of race, color or national origin of that person, or the child involved, and from delaying or denying the placement of a child for adoption or foster care on the basis of

race, color, or national origin. The review focused on how we recruit in our community, rules compliance, and the comparison of our foster caregivers' child characteristics preferences to the characteristics of our children in placement. Ohio is under a strict corrective action plan with the federal Health and Human Services for violating this law, so I am sure that ODJFS is pleased with Pickaway County for having a good review.



Higher Education in Pickaway County Update

By: Jan Shannon

The Higher Education continues to be promoted in Pickaway County. To accomplish this task the Commissioners have appointed a committee that will lead the initiative. The members consist of nominees, most of which have come from the Superintendents of Logan Elm, Teays Valley, Westfall and Circleville. In addition, the Commissioners are in the process of identifying a Higher Education Coordinator to work throughout the county with the students of our four local schools.



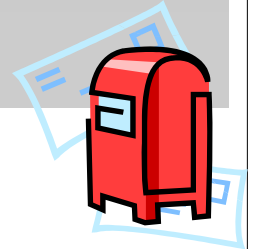
Public promotion has continued to be done on this project and presentations have been made to over 560 people in Pickaway County to raise the awareness of the need for Higher Education.

Another accomplishment of this committee is the agreement of Columbus State Community College and Ohio University to begin holding classes at Teays Valley High School in January, 2007. Anyone interested in enrolling in classes should visit the schools websites.

PCJFS GETS NEW POST OFFICE BOX NUMBER

Our new mailing address is:

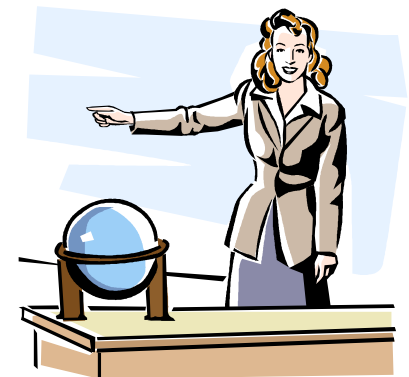
**Pickaway County Job & Family Services
P.O. Box 610
Circleville, OH 43113**



QUOTE OF THE DAY

No act of kindness, however small, is ever wasted.

~Aesop



UPCOMING EVENTS

- November 17, 2006 - Harvest Basket Raffle
- Nov. 23 & 24, 2006 - Thanksgiving Holiday (office closed)
- December 6, 2006 - County Christmas Party
Eastern Star Hall, 1575 N. Court St.
- December 9, 2006 - Annual Recognition Banquet &
Christmas Party, Foxfire Golf Course
- December 20, 2006 - Quarterly All Staff Meeting
8 - 9:30 am, AmVets
- Dec. 25 & 26, 2006 - Christmas Holiday (office closed)



Children Services Division - New Adoption Assessors

By: JoEllen Deal

Pictured from
left to right:
Laurie Noggle
& Kim Cullen



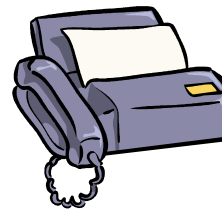
The Children Services Division is happy to announce that Laurie Noggle and Kim Cullen were sworn in by Judge Jan Long as Pickaway County Adoption Assessors. Ohio law mandates that Social Workers involved in the adoption process must have completed mandatory training and be certified. The intent of this law is the assurance that everyone involved in the adoption process receives consistent information about adoption laws, practice, procedures, and financial subsidies. Each worker completed the 72 credit hour requirement which covers topics about family and child assessments, birth parent services, cultural issues, open adoptions, post adoption issues, and available subsidies.

Congratulations Laurie & Kim!

Right Fax is Here!

By: Jana Reisinger

On August 21st, PCJFS implemented Right Fax for inbound faxes. Right Fax is a piece of software that is connected to the fax lines. With this implementation, workers no longer receive the paper version of their faxes. The fax is received at the same number, with no visible changes to the outside person. Customer Service retrieves them from an Administrative Fax Utility box where it is sorted and distributed to the appropriate worker. They are not printed and put in boxes. They are sent by Fax Utility and the worker has to check their specific Fax Utility box throughout the day for faxes received. It cannot alert you that you have a fax received like Groupwise. If the document you received needs to be put into a case, the case worker has to import the document.



Faxes are to be deleted out of Fax Utility as they are viewed because they are using space on our server. **DO NOT SAVE THEM IN RIGHT FAX.**

The upstairs fax machine remains as normal, not using Right Fax for inbound faxes.

Right Fax is also used for outbound faxes. If a worker has created a document in Word, Excel, etc., you can send a fax through Right Fax without having to print the document and walk to a fax machine.

PCJFS Keeps Community Partnerships Alive

By: *Patty Fouch*

We have long since wrapped up our strategic plan initiative related to developing and enhancing our Community Partnerships; but here we are, a year later, keeping it going and making it part of our JFS lifestyle. Employees have participated in countless activities throughout the last year, including Third Thursdays, March of Dimes Walk, United Way Community Care Day, Friday in the Park, Summer Lunch Program, Pumpkin Show, Heart Walk, Red Cross Blood Drive--to name just a few.

In addition to developing and enhancing Community Partnerships, we are continuing to communicate to the public what we do. Our most recent accomplishment is the establishment of www.pickawayjfs.org.



PCJFS workers participate in the United Way Community Care Day. Pictured from left to right are: Jodi Beckley, Laura McGuire & Carla Ackley.

Caseworkers Peggy Perrill & Emily Brown help out with a sack race game during the Friday in the Park program sponsored by the PCJFS Children Services Division.



JOBS One-Stop Holds Job Fair Workshop & Job Fair

By: *Julie Bolin*

The JOBS One-Stop held a Job Fair Workshop on September 18. The Workshop was set-up to help people prepare for the large job fair scheduled for the following day. Individuals that attended the workshop brought their resumes and dressed as if they were going to the job fair. The One-Stop Staff and Partners gave a presentation on various topics, including what to expect at the job fair, an overview of the employers, tips for filling out applications, and how to dress and groom for the job fair. Following the presentation, the participants of the workshop were paired one-on-one with staff members to review their resumes and do mock interviews. Also, if participants did not have a resume or needed to make changes or revisions, staff was available to help them in the resource room. At the end of the workshop, eligible participants received hygiene kits. The Workshop was a great success and staff received great feedback from the participants about the workshop.

The JOBS One-Stop then hosted a job fair at the AmVets on September 19. It was quite a success with 42 employers and over 350 job seekers! Many job seekers were able to complete applications and have on-the-spot interviews at the job fair. The employers were very pleased with the number and quality of job seekers. We have also had many reports of our job seekers finding jobs as a result of the job fair!



The 100th Annual Pumpkin Show

By: *Becky McVey*

“Where’s mine, where’s mine, mommy?” were the words of an excited little girl as she stood searching for the picture that she had colored a few days earlier while she was in child care. After looking over two hundred and fifty-eight pictures that were hanging throughout the Pumpkin Show Booth, the little girl said with a big smile “there it is!” That’s what it’s all about” said PCJFS Director, Rojanne Woodward, who was volunteering her time that evening in the booth.



With all units/divisions represented, nearly fifty employees from PCJFS volunteered their time to help in some capacity with the Pumpkin Show Booth this year. In furthering the mission of PCFJS, hundreds of people had an opportunity to stop by the booth to learn about services, ask questions, and to pick up various promotional items that were being offered.

It is through the efforts and dedication of the staff at PCJFS that the Pumpkin Show Booth was successful. Through various activities such as this, the Pickaway County community is afforded the opportunity to obtain valuable resource information.

A big thank you to all of you that volunteered your time this year.



Pictured above are PCJFS workers (from left to right) Don Blanton, Danielle Longhenry, Joe Brust, Wendi Bennett, Michelle Lane & Joy Ewing

Heart Walk

“Walk. Change Tomorrow. Today.”

By: *Joy Ewing*

On September 27, the American Heart Association sponsored their annual Pickaway County Heart Walk at the YMCA. Pickaway County Job and Family Services was one of approximately 20 teams that participated that day. The 21 participants on our team raised \$783.00 to help in the fight against heart disease, stroke and other related diseases.

Everyone enjoyed refreshments and many companies set up displays. The Pumpkin Show Band provided entertainment and various speakers gave testimonies about the effects of heart disease. Thank you to everyone who participated and donated to the American Heart Association.



PCJFS’s “Biggest Loser”

By: *Melinda Eversole*

On November 7th, Cristy Lewis, JOBS One-Stop worker, presented Lisa Johnson, Director of Haven House, a check for \$150.00.



Pictured above from left to right: Lisa Johnson, Director of Haven House, and PCJFS’s Biggest Loser,

On Monday, August 21st, 16 of the PCJFS staff began participating in the "Biggest Loser" contest to see who could lose the most weight in 10 weeks. A \$20.00 entry fee was collected from each participant with the stipulations that half of the pot collected from the entry fees would go to the winner's favorite charity.

On October 30th, Cristy Lewis was announced as PCJFS’s biggest loser - losing a whopping 19 ½ pounds. Wow! Way to go Cristy!!



EMPLOYEE BUZZZZZZZZZZ



Our Little Star

PCJFS Staffing Changes

By: Joni Erwin

Over the past several months, we have had a few employee changes within PCJFS. These individuals have all transferred from other positions within our agency. They are as follows:

On September 2, 2006, Joy Ewing accepted the position of Family Support Administrator.

On October 2, 2006, Danielle Longhenry accepted the position of Eligibility Referral Specialist 2 in the Adult / Disabled Unit of our Family Support Division. Her job will now focus on Nursing Home and Waiver cases.

On October 16, 2006, Jodi Beckley transferred from our Customer Service Unit to our Family Support Division as a Eligibility Referral Specialist 2 in the Adult/Disabled Unit.



JOBS One-Stop worker Kasey Strawser and her husband, John, are proud parents of a 8 lbs., 1 oz. baby girl, Regan Michelle, born on March 24, 2006. Regan was 19 inches long.

Congratulations Kasey & John!!!

Pumpkin Walnut Fudge



- 3 cups sugar
- 1 cup milk
- 3 tablespoons light corn syrup
- 1 cup fresh pumpkin puree or canned pumpkin puree
- 3 tablespoons unsalted butter, cut into bits
- 1 teaspoon vanilla
- 2 cups chopped walnuts



In a 4-quart heavy saucepan combine the sugar, the milk, the corn syrup, the pumpkin puree, and a pinch of salt, cook the mixture over medium low heat, stirring occasionally, until the sugar is dissolved, and until a candy thermometer registers 238°F. (a little of the mixture dropped into cold water should form a soft ball.) Remove the pan from the heat, add the butter (do not stir it into the mixture), and let the mixture cool until it is 140°F. Stir in the vanilla and the walnuts, beat the mixture with a wooden spoon for 1 minute, or until it begins to lose its gloss, and pour it immediately into a buttered 9-inch-square pan. Let the fudge cool until it begins to harden, cut it into squares, and let it cool completely. The fudge keeps, stored between sheets of wax paper in an airtight container, in a cool place for 2 weeks.

BIRTHDAYS

OCTOBER

3rd-Dee Thornton; 16th-Stephanie Eitel; 18th-Danielle Longhenry; 20th-Pam Woods; 22nd-Rick LeMaster

NOVEMBER

3rd-Rick Noble; 15th-Roxan Sigmon; 19-Lisa Leach; 21st-Cindy Foreman; 24th-Tracy VanHorn; 29th-Joni Erwin

DECEMBER

2nd-Rhonda Hoffman; 3rd-Judy Magill; 13th-Wendi Bennett; 14th-Michelle Lane; 16th-Larry Sigmon; 19th-Linda Coffman; 24th-Don Blanton; 26th-Teryl Seitz